

COMPREHENSIVE CANCER INFRASTRUCTURES 4 EUROPE

OECD Oncology Days 2025

***WP2 - “Definition of criteria for Comprehensive Cancer
Infrastructures (CCIs) using a CCI Maturity Model
(CCI MM)”***

Update on the Maturity Model

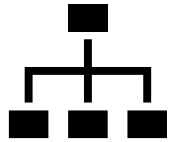
The CCI Maturity Model as the Golden Thread



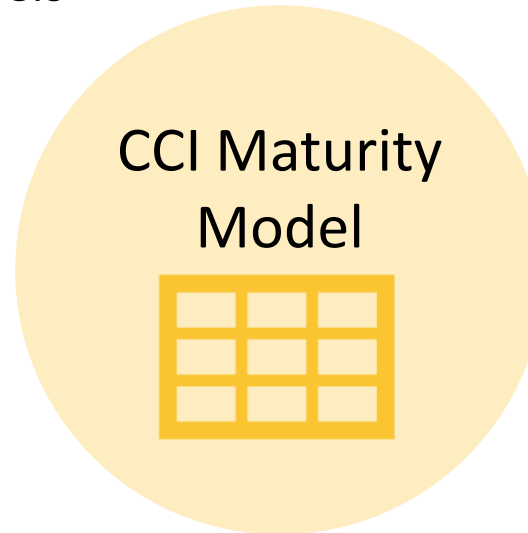
Assess the maturity
of (potential) CCIs



Transparent overview of the
maturity of CCI developments in
the MS incl. scoring mechanisms



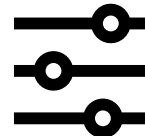
Structure the CCI criteria



Quickly identify themes/criteria
with potential for improvement



Overview of the effects of Capacity
Building Interventions (= reaching a
higher maturity level)



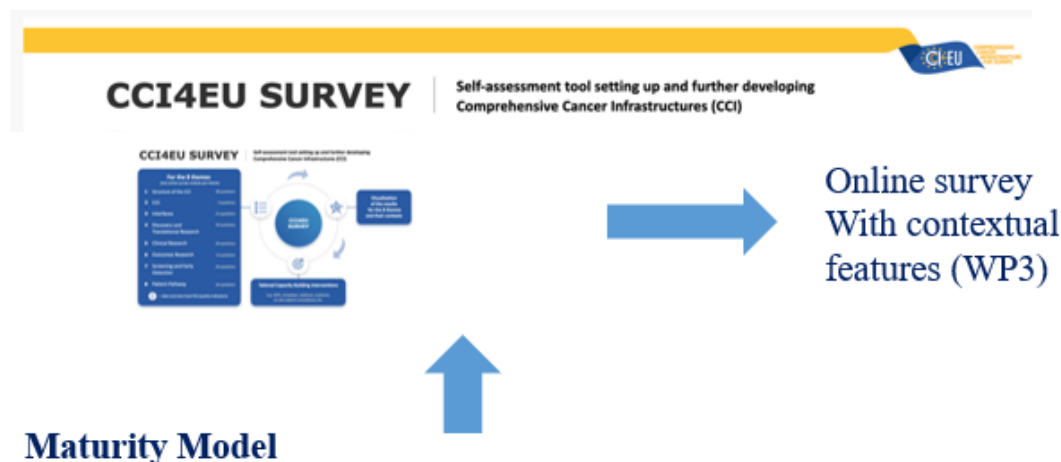
Define differentiated tailored
interventions for Capacity Building



Data analysis and decision
on Deep Dives for Capacity
Building

- **D2.1. Definition of criteria & QI for CCI (M12)**
- **D2.2. Maturity Model & Maturity Web Tool (M12)**

Final Set of Criteria:		
1		Structure of the Comprehensive Cancer Infrastructure (CCI)
2		Comprehensive Cancer Centres (CCC)
3		Interfaces & Quality Indicators
4		Discovery and Translational Research
5		Clinical Research
6		Outcomes Research
7		Screening and Early Detection
8		Patient Pathway

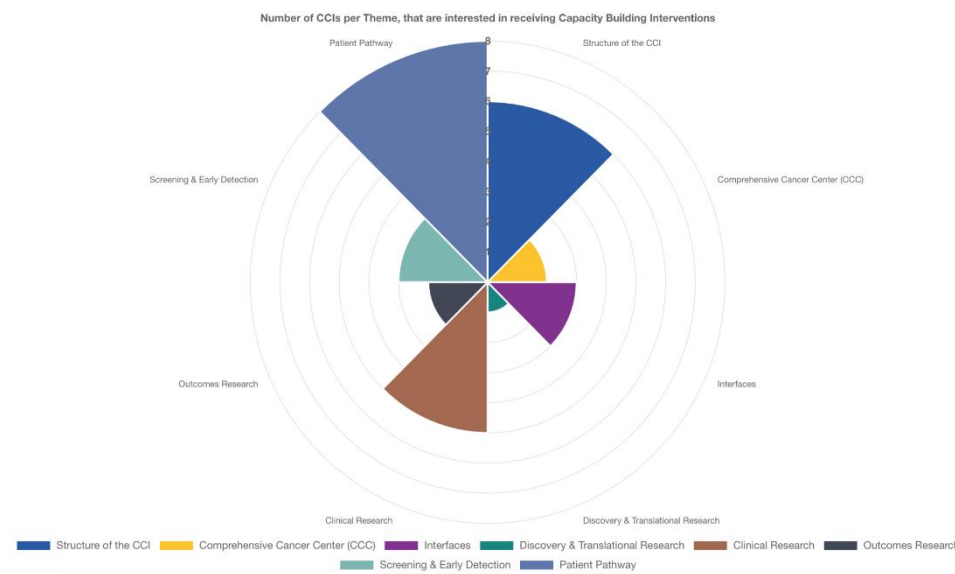


		Level 1	Level 2	Level 3	Level 4
Theme 1: Structure of the CCI Network	Criterion 1 & Target State	Criterion description 1.1	Criterion description 1.2	Criterion description 1.3	Criterion description 1.4
	Criterion 2 & Target State	Criterion description 2.1	Criterion description 2.2	Criterion description 2.3	Criterion description 2.4
	Criterion 3 & Target State	Criterion description 3.1	Criterion description 3.2	Criterion description 3.3	Criterion description 3.4

Online Survey to CCI Maturity Model Web Tool

Populating the CCI
Maturity Model
based on survey
data

	Level 1	Level 2	Level 3	Level 4
Structure of the CCI	3 of 15	1 of 15	0 of 12	1 of 7
Comprehensive Cancer Center (CCC)	1 of 1	1 of 1	2 of 2	1 of 1
Interfaces	4 of 10	3 of 15	3 of 13	1 of 11
Discovery & Translational Research	11 of 11	12 of 14	6 of 16	1 of 12
Clinical Research	6 of 9	9 of 14	4 of 19	1 of 15
Outcomes Research	3 of 4	5 of 8	3 of 9	0 of 6
Screening & Early Detection	12 of 13	6 of 13	5 of 14	2 of 15
Patient Pathway	2 of 3	9 of 13	7 of 14	3 of 14



CCI Maturity Model Web Tool:

- In place & applied to the results of all CCIs' maturity evaluation (after CCIs use of Maturity Model in the online survey) – **56 CCIs in total**
- Have served to **visualise the MM results, guide the selection of Deep Dives & indicate focus areas for capacity building**

Maturity Model Dissemination Activities



Advancing Comprehensive Cancer Infrastructures in Europe: Development and Implementation of the CCI4EU Maturity Model

Abstract

Background: Cancer care infrastructures in Europe differ substantially in quality and coordination, leading to disparities in patient outcomes and limited capacity for collaborative research. To address these differences, the concept of Comprehensive Cancer Infrastructures (CCIs) has been introduced—regional or national frameworks that integrate prevention, care, research, education, and patient engagement to deliver high-quality, coordinated oncology services. Within this context, the CCI4EU project developed a Maturity Model (MM) to assess and guide the structured development of CCIs across EU Member States.

Objective: This paper introduces the CCI4EU Maturity Model and Web Tool as instruments to assess, develop, and benchmark CCIs. This maturity model should further promote shared terminology, and support capacity building in cancer care infrastructure.

Methods: The development of the CCI4EU Maturity Model followed a structured expert consensus process, drawing on established methods from health systems and implementation research. For each of the eight MM themes, dedicated working groups composed of nominated experts from across Europe collaboratively defined criteria, target states, and proofs of achievement. These were refined in a multi-stage process and translated into a four-level maturity structure. Internal consolidation and a consortium-wide consensus conference were followed by an external piloting phase in five EU Member States, validating the model's clarity, consistency, and feasibility.

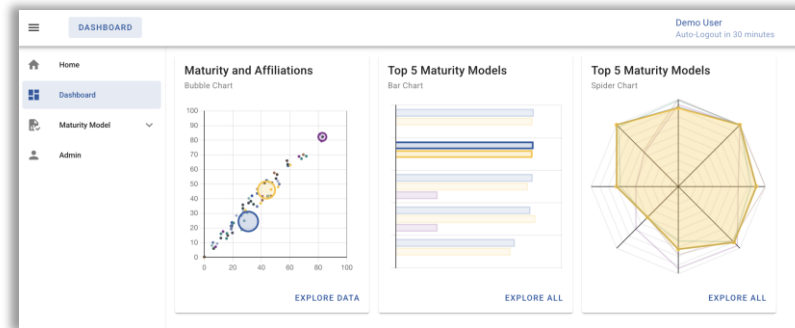
Results: The final model comprises 27 criteria and 55 target states. Each target state is linked to measurable indicators and allocated to one of four maturity levels. The model supports self-assessment, benchmarking, and structured progression toward comprehensive cancer infrastructures. A web-based implementation enables interactive applications and data visualisation.

Conclusion: The CCI4EU Maturity Model offers a structured, consensus-based framework for evaluating and advancing European cancer infrastructures. By supporting shared goals, standardised assessment, and strategic development, the model fosters equitable access to high-quality cancer care and research across Member States.

Keywords: Maturity Model, Comprehensive Cancer Infrastructure, Cancer Care Standardisation, Capacity Building, Cancer Policy.

IN PROGRESS

Publication about the work in
WP2 focusing on the CCI
concept, CCI Maturity Model
development and contents



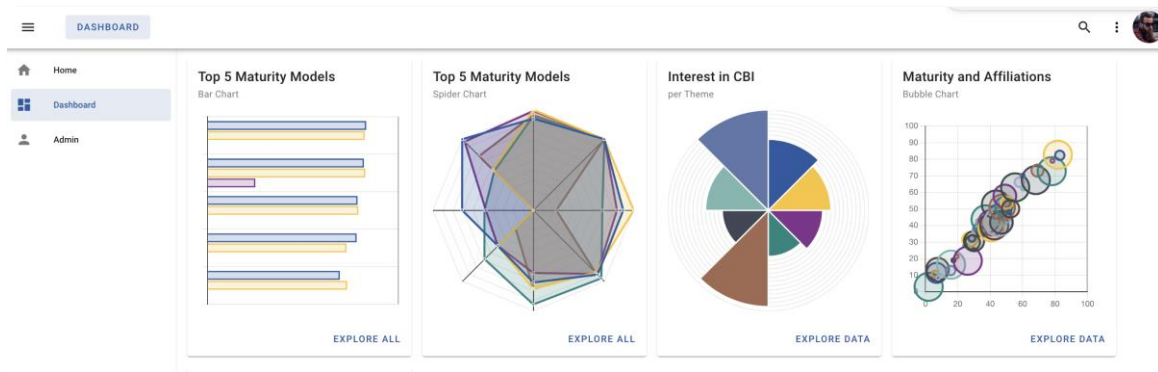
Provide (potential) CCIs who participated
in T0 assessment access to their data and
allow anonymous comparison to others in
the CCI Maturity Model Web Tool



IN PROGRESS

Provide access to the CCI Maturity Model
for interested aspiring CCIs via the CCI4EU
website / resource centre

CCI Maturity Model Web Tool – Developments & Outlook

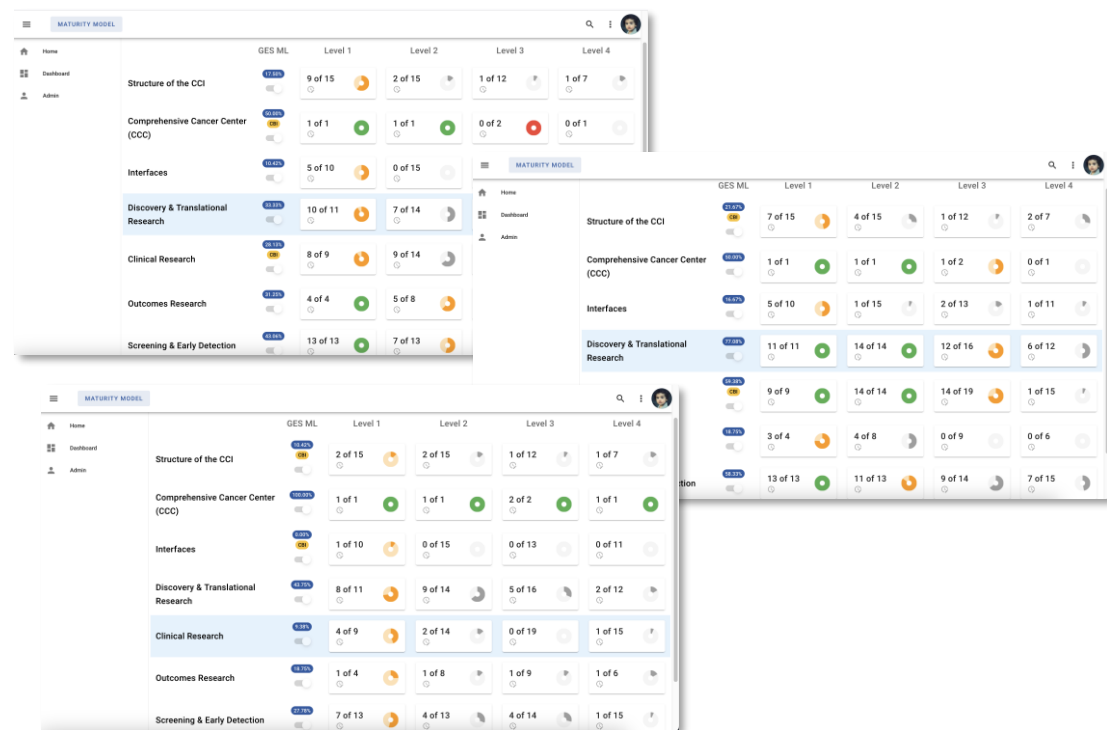


- Inclusion and representation of all T0 survey data in the Maturity Model Web Tool
- Provision of data access for each CCI provided (read only)
- Anonymous comparison to other CCIs
- Admin view on all (potential) CCI data sets incl. comparison via dashboards

IN PROGRESS

- Utilise Maturity Model Web Tool for T1 assessment as well
 - Versioning
 - T0 data freeze
- Display CCI maturity progression over time
- Further integration of the Global Efficacy Score (GES)

NEXT: conceptualisation of web tool features for T1 assessment and evaluation purposes



Thank you very much for you attention!

Any questions?

